

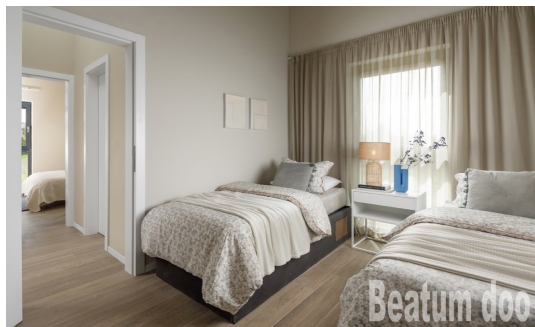
**BEATUM d.o.o.**

**Gradska Vrata 32, 52466 Novigrad**

**mail: info@beatum.hr**

**web: www.beatum.hr**

**info: +385 91 201 7329 | ++385 52 758 170**



<b>Code :</b>	03262
<b>Location :</b>	Poreč
<b>Building size :</b>	113 m2
<b>Lot size :</b>	70 m2
<b>Distance from center :</b>	2000 m
<b>Distance from sea :</b>	950 m
<b>Number of floors :</b>	2
<b>Number of bedrooms :</b>	2
<b>Number of bathrooms :</b>	2
<b>Energy efficiency :</b>	Not specified
<b>Sea View :</b>	Yes
<b>Parking lot :</b>	Yes
<b>Swimming pool :</b>	Yes
<b>Basement :</b>	Yes
<b>Pantry :</b>	Yes
<b>Electricity :</b>	Yes
<b>Connected to the city water supply :</b>	Yes
<b>Heating :</b>	Yes
<b>Air conditioning :</b>	Yes
<b>Terrace :</b>	Yes
<b>Garden :</b>	Yes

**Price :** 490.000 €

#### May Townhouse

The houses in a row called Maj Townhouse virtually an example of a modern residential construction in Veli May in Poreč.

Ten houses in a row, five on each side, seem like a world for themselves, and with a smart architectural solution

They allow high levels of privacy with a warm sense of neighborhood. Each house has a garden and a parking space, and

Six houses also have a sea view. The nearest decorated beach is 950 m away and the center of Poreč 2 KM. The houses are

Literally created to enjoy - enjoying with family, enjoying with children, enjoying with society with a barbecue, enjoying the to life.

#### Technical specifications

Each house consists of two floors and an average of 65 square meters, with a larger or smaller square footage

garden, depending on the location of the house. The square footage varies from 42 m<sup>2</sup> to 104 m<sup>2</sup> and the space is fenced.

The interior is organized in such a way that the unique space of the kitchen, dining room and living room on the ground floor, with exit to the terrace, while on the upper floor there are rooms. A larger

**BEATUM d.o.o.**

**Gradska Vrata 32, 52466 Novigrad**

**mail: [info@beatum.hr](mailto:info@beatum.hr)**

**web: [www.beatum.hr](http://www.beatum.hr)**

**info: +385 91 201 7329 | ++385 52 758 170**

bathroom is upstairs and toilet in ground floor. Each house belongs to one parking space with the possibility of adding more parking spaces.

Interior

Particular attention is given to the organization and interior design to make the home stay as comfortable as possible.

The emphasis is on the natural light it has in abundance thanks to large glass surfaces. Contemporary style

Arrangements with daylight and use of natural colors contribute to radiate the ambience with optimism and comfort.

The ground floor was performed as one fluid room in which the garden was extended, and it was conceived ...